

An aerial photograph of a bridge under construction, overlaid with a semi-transparent blue filter. A white van is parked on the bridge deck, and several orange traffic cones are visible along the edge. The bridge spans a deep valley with dense evergreen trees on both sides.

Emergency Project: Necarney Creek Bridge Repair US-101 Manzanita

Calvin Marvich, ODOT - Construction Specialist Region 2

Tim Whiteis, Wildish - Project Manager



Project Background

- August 24th, a member of the community called in to report a 50 ft section of sidewalk and railing had fallen off the bridge.
- The bridge was promptly closed to conduct an emergency inspection.
- The bridge was opened under 24-hour flagging.
- September 22th, Wildish began repair.

Scope Of Repair: Defining The Work Ahead

- Remove 4 sections of existing steel tube rail
- Remove damaged ornamental concrete bridge rail, sidewalk and overhang
- Repair adjacent concrete expansion joint post
- Construct deck overhang, sidewalk and ornamental concrete bridge rail
- Install 4 sections of new steel tube bridge rail retrofit





Emergency plans were implemented rapidly, reducing potential risks to public safety.

Teams were deployed quickly to assess the damage and begin repair efforts without delay.





Every step was guided by a commitment to safety for workers and the public

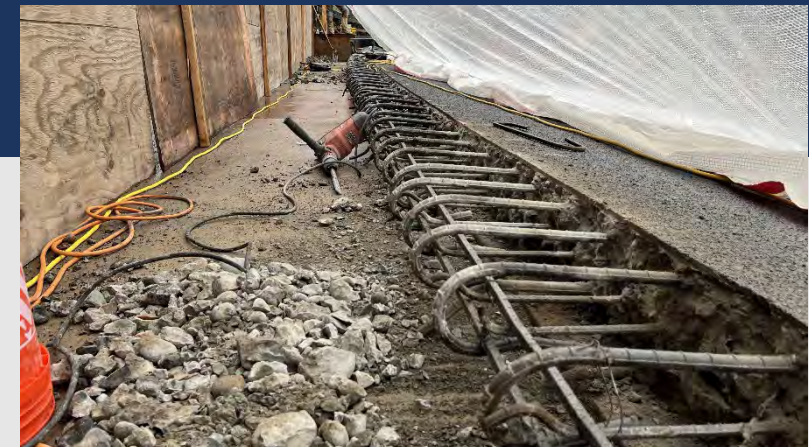
Collaboration In Action: Key Milestones



Falsework installed



Chipping guns used to remove concrete



Existing transverse rebar preserved and protected



Resource Allocation: Delivering Efficiency

- Materials: relied on trusted distributors and leveraged local suppliers.
- Equipment: under bridge platform (snooper truck) utilized to expedite repair, and mini mix concrete truck minimized waste enhancing efficiency.
- Workforce: The skilled and well-coordinated, minimized disruptions, committed to safety and quality.



Collaboration turns
challenges into opportunities
for innovation



Nehalem OR 97131
United States
Oswald West State Park



By coordinating crews, equipment, and materials, we minimized downtime and maximized productivity.

Safety First: Protecting The Community And Workers

- A commitment to safety kept the project on track,
- Community Safety Measures: 24-hr flagging, consistent traffic control inspection, and community alters and updates
- Worker Safety Protocol: PPE, fall protection, traffic control, and regular safety meetings.





Every obstacle was a chance to showcase resilience, teamwork, and our shared commitment to rapid results

Lessons Learned: Keys To Successful Partnership

- Proactive damage assessment defines goals and keeps expectations aligned.
- Open communication builds trust and keeps the project moving forward.
- Collaboration leads to innovation; better solutions emerge when teams work together.



Questions ?